



Needs Assessment Update June 2020

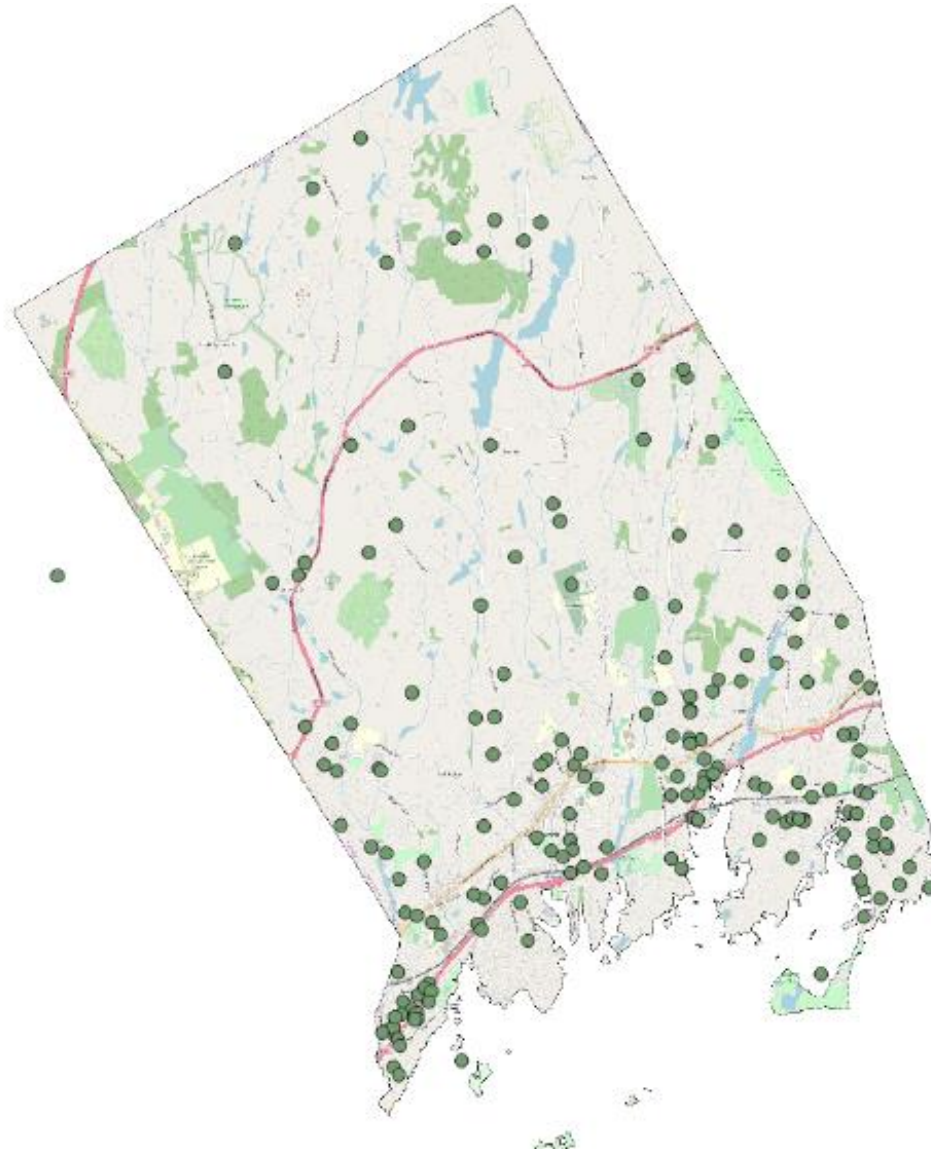
What Has Been Done Where We Are & What is Ahead

- Successfully completed the survey phase, we have sample size large enough to make inferences about the Town
 - Started the interview phase in March/April
 - Interviews included key stakeholders, nonprofit leaders, and community members
 - Interviews will be completed by end of June
- After we analyze the interview information we will move on to the focus group phase
- Fairfield U and GUW staff will work together on the narrative. We expect to start this phase in Fall 2020

Top 3 Needs Based on Survey Results

- Affordable Housing
- Early Childhood Education
- Physical & Mental Health

Snapshot of Survey Respondents Geographic Area



Current Timeline

2020				
	MARCH	APRIL	MAY	JUNE
OBSERVATIONS	Attend/observe community meetings			
DEMOGRAPHICS/GIS	Weekly research team objectives	Preliminary presentation of results via Innovative Research Symposium at Fairfield University (student researchers, Jonathan, Mehmet)	Complete demographic/GIS analysis	Collaborate with all project teams to fold demography/GIS data and findings into dashboard & final report
SURVEY (3000)	Continue survey (additional responses) + review respondent rate & strategy	Phase 1 analysis & briefing to full team (analyze available responses)	Continue survey (additional responses)	Phase 2 analysis & briefing to full team (analyze available responses)
INTERVIEWS (12+)	Develop interview protocol based on initial survey results and core assessment themes; compile list of key interview contacts from GUW	Finalize interview protocol, interviewee contact list, and schedule	Zoom/Phone interview sessions (8-10)	Zoom/Phone interview sessions (8-10)
		Test, then begin Zoom/Phone interview sessions (3-6)	e-files uploads (audio recording, interview notes by observer, transcript production)	e-files uploads (audio recording, interview notes by observer, transcript production)
FOCUS GROUPS (8-12)		Identify stakeholder categories and representation for focus groups (admin to client levels)	Draft one: focus group protocol (with technology, software licensing, location/s, core themes for inquiry)	Finalize focus group protocol and questions with guidance and final approval by GUW
			Finalize focus group lists, establish focus group dates, locations, and recruiting focus group members	Practice focus group process and tech use
DASHBOARD	Develop/mock-up models for dashboard elements (for GIS results)	Develop/mock-up models for dashboard elements (survey preliminary results)	Revised dashboard strategy (content, style guide, timeline)	Collaborate with all project teams to fold focus group data and findings into client and community reporting (dashboard creation, final report)

Current Timeline

2020				
	JULY	AUGUST	SEPTEMBER	OCTOBER
OBSERVATIONS	Attend/observe community meetings; fold observations into dashboard creation & final report			
DEMOGRAPHICS/GIS	Collaborate with full project team to fold demographics/GIS data and findings into dashboard & final report			
SURVEY (3000)	Collaborate with full project team to fold survey data and findings into dashboard creation & final report			
INTERVIEWS (20+)	Phase 1 Analysis: coding interview data	Phase 2 Analysis: Text Analysis & Cognitive Domain Analysis; preliminary results briefing to full team	Collaborate with full project team to fold interview data and findings into dashboard creation & final report; thank you notes to interviewees	
	Finalize digital archive for all interview files and analyze data.			
FOCUS GROUPS (6-10)	Conduct focus groups over 4 days with 3 focus groups each (modify per budget and revised plan)	Finalize transcripts of all focus groups and add all focus group data files to digital project archive	Complete qualitative and descriptive analysis of focus group data	Complete final reporting of focus group results; thank you notes with update to participants
		Begin qualitative and descriptive analysis of focus group data		
DASHBOARD	Develop/mock-up models for dashboard elements (for GIS & survey results)	Develop/mock-up models for dashboard elements (for interview & focus group results)	Revised dashboard strategy (content, style guide, timeline)	Full team collaboration: developing dashboard and final report

Current Timeline

	2020		2021
	NOVEMBER	DECEMBER	JANUARY
OBSERVATIONS	Attend/observe community meetings; fold observations into dashboard creation & final report		DELIVERY - Dashboard & Final Report
DEMOGRAPHICS/GIS	Collaborate with all project teams to fold demographics/GIS data and findings into dashboard & final report		DELIVERY - Dashboard & Final Report
SURVEY (3000)	Collaborate with full project team to fold survey data and findings into dashboard creation & final report		DELIVERY - Dashboard & Final Report
INTERVIEWS (12+)	Collaborate with full project team to fold interview data and findings into dashboard creation & final report		DELIVERY - Dashboard & Final Report
FOCUS GROUPS (8-12)	Complete final reporting of focus group results; thank you notes with update to participants		DELIVERY - Dashboard & Final Report
DASHBOARD	Full team collaboration: developing dashboard and final report		DELIVERY - Dashboard & Final Report

Samples of Design for End User

Napa County Public Health | Live Healthy Napa County | Livable Communities Health Assessment | Emergency Food System Study

2018 Community Health Assessment Napa County, CA

EXECUTIVE SUMMARY | DEMOGRAPHICS | BUILT ENVIRONMENT | SOCIAL ENVIRONMENT | COMMUNITY HEALTH ENVIRONMENT | HEALTH OUTCOMES

Live Healthy Napa County | Vive Saludable Condado de Napa

Welcome! Navigation Video Guide

Welcome to the 2018 Napa County Community Health Assessment (CHA). The following pages contain information on the state of local community health as assessed by Napa County Public Health and the Live Healthy Napa County (LHNC) community collaborative in 2018.

The work contributing to this assessment was broken down into two parts. The primary assessment is built around the **Livable**

2018 Hendricks County CHA: Primary Survey Results

Back to Introduction | Next: Secondary Data Review

Primary Survey Results

Healthier Together Storyboard
Washington County, Oregon

Healthy Communities | Healthy People | Community Health Improvement Plan

Priorities for the current CHIP:
Improve Access to Health Care
Including primary care, behavioral health and oral health services

Percent of Population Without Health Insurance Coverage

Coverage Status: Uninsured

Year	Percent Population
2014	10.0
2015	7.0
2016	5.0
2017	6.0

Source: ACS 1-year estimates, Table S2701.

6% ±0.45
Washington County, OR

People per Primary Care Physician

Year	People per Physician
2010	1.15
2011	1.15
2012	1.15
2013	1.15
2014	1.15
2015	1.15
2016	1.15

Source: Area Health Resource File/American Medical Association

514
Number of Primary Care Physicians
2016
Washington County, OR